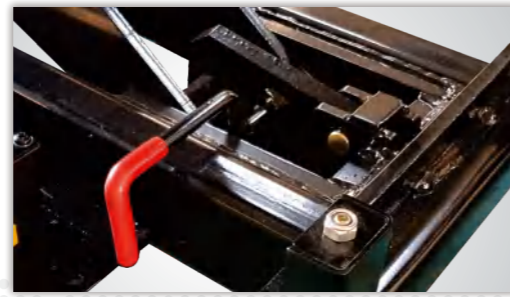


▲ Crafted to a high standard, the cylinder is equipped with high-quality oil seals and high-pressure oil hoses to ensure durable, efficient hydraulic performance.



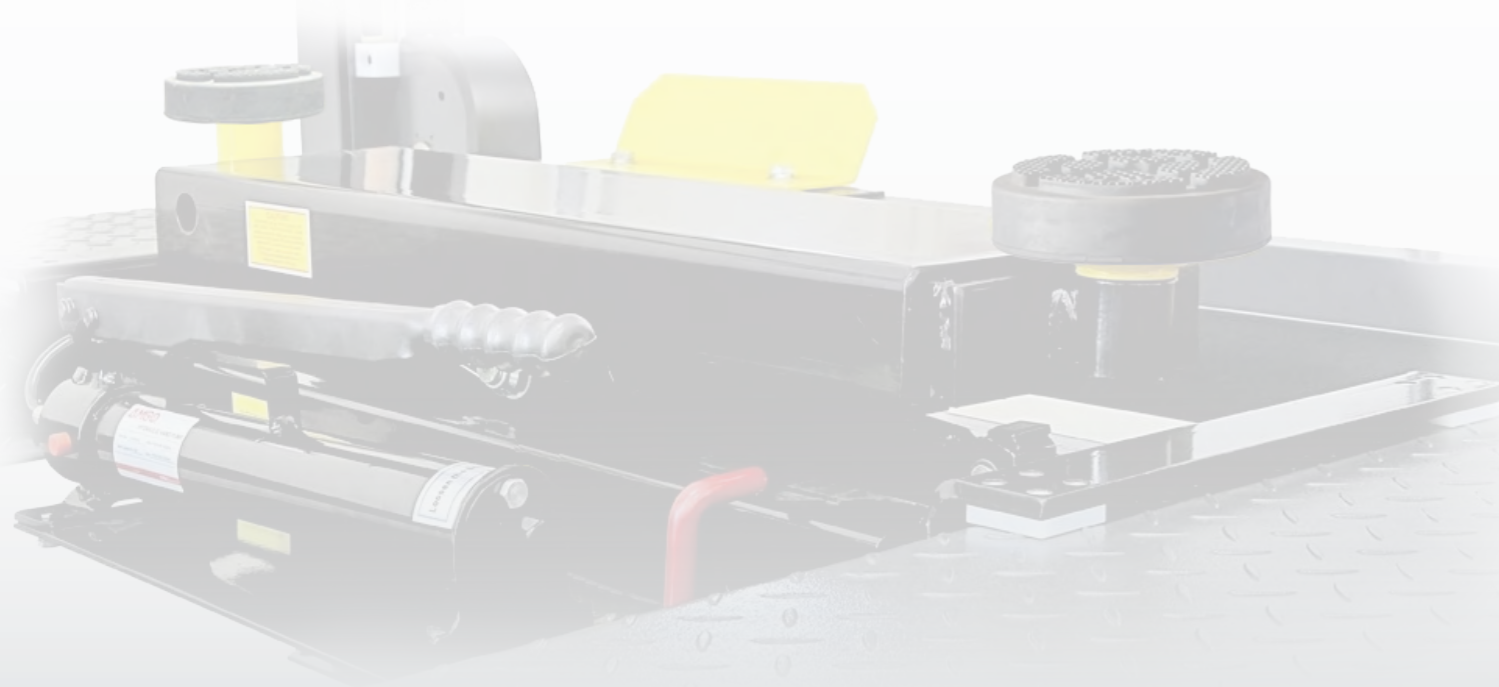
▲ An exquisitely easy-to-operate manual control safety lock device with multiple lock positions ensures a secure and comfortable working height.



▲ The guardrail is ergonomically designed to ensure the jack moves smoothly and protect the oil hoses.



▲ The telescoping arms ensure maximum compatibility with a wide range of vehicles, and the adjustable lower sliding assembly is versatile enough to work with almost all four-post and scissor lifts on the market.



## ROLLING JACK

**PEAK**  
World-class lifts

*Designed to handle loads ranging from 2,200kg to an impressive 9,000kg, our industry-leading rolling jacks transform your four-post lift or scissors lift into a fully-fledged workstation, delivering unparalleled performance and efficiency. Designed for universal compatibility, they seamlessly integrate with all major car lift brands, giving you the versatility to tackle any job with confidence.*

## MANUAL HYDRAULIC & PNEUMATIC HYDRAULIC



**PEAK CORPORATION**  
<http://www.peaklift.cn>



No.3 Luomu Road, Muyuan, Shishan Town, Nanhai District, Foshan (528225), China  
Tel:86-757-81102815 Fax:86-757-81102809

# MODEL J5H

J5H is the ideal jack solution for a lift without rails on the runways, such as our parking lift models. With a capacity of 2,200 kg, this jack can be used to service a large number of vehicles on a daily basis. The use of hand pump eliminates the need for air-source, enhancing the working adaptability.



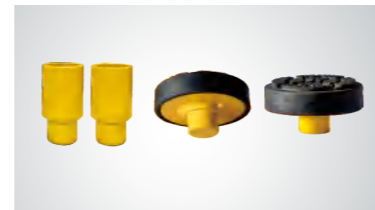
**2200KG(5,000lbs)**



The commercial-standard manual pump is convenient to use and eliminates the need for an additional air source.



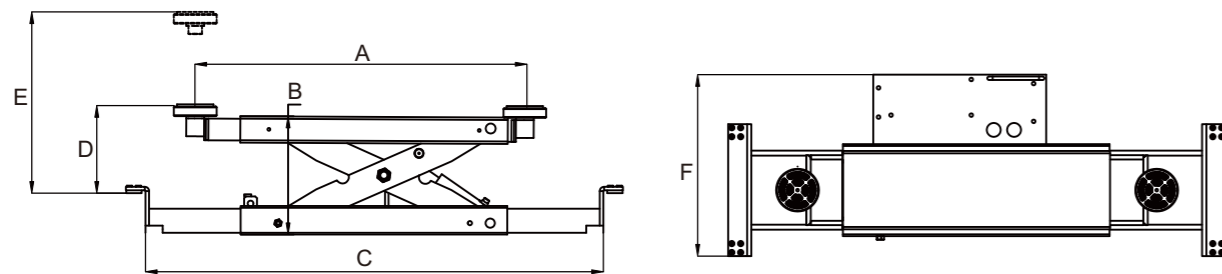
▲ Extendable lower sliding assembly is equipped with plastic sliders, which support the jack move smoothly and easily on the runway.



▲ Drop in rubber pads with 2.5" extension adapters.

## FEATURES

- Equipped with commercial-grade manual hydraulic pump (no air source required).
- Drop in rubber pads and 2.5" extension adapters come standard.
- Extendable arms allow for easy positioning at the recommended support points.
- Manual safety locks with two locking positions ensure a comfortable working height.
- The extendable lower sliding assembly offers excellent compatibility with products from various brands.
- The ergonomic guardrail doubles as a booster handle, making it easy to move the jack while protecting the oil hose.



## SPECIFICATIONS

Model	Lifting Capacity	Lifting Time	A	B	C	D	E		F	Gross Weight	Air Pressure	Pump
			Arm Pads Reach	Min.Height	Support Base Width	Min.rubber pad Height	Without adapters	With adapters				
J5H	2200kg	50S	842mm~1357mm (33 1/8"~53 7/16")	220mm (8 11/16")	905mm~1257mm (35 5/8"~50 3/16")	129mm (5 1/16")	356mm (14")	420mm (16 9/16")	510mm (20 1/16")	124kg (273lbs)	/	Manual Pump
J6H	2800kg	50S	843mm~1357mm (33 1/16"~53 7/16")	215mm (8 1/2")	848mm~1330mm (33 3/8"~52 3/8")	219mm (8 5/8")	451mm (17 3/4")	517mm (20 1/4")	510mm (20 1/16")	127kg (280lbs)	/	Manual Pump
J6A	2800kg	50S	843mm~1357mm (33 1/16"~53 7/16")	215mm (8 1/2")	848mm~1330mm (33 3/8"~52 3/8")	219mm (8 5/8")	451mm (17 3/4")	515mm (20 1/4")	510mm (20 1/16")	127kg (280lbs)	0.8Mpa	Pneumatic Pump

\*\*\*The images, technical specifications, and descriptions shown here are subject to change without prior notice. Please contact us for the latest information if necessary.\*\*\*

# MODEL J6H J6A

The J6 Series rolling jack boasts a low-profile design and a lifting capacity of 2,800 kg. This makes it an ideal complement to any four-post or scissors lift with a capacity of less than 5,500 kg. The floating patent technology has been developed to enhance the smooth movement on the rail and ensure stable sitting in the groove when lifting a vehicle.



**J6H 2800KG (6,000lbs)**



▲ Patented floating system ensures the jack move smoothly on the rail and sit stably in the groove when lifting a vehicle. Patent no. 2022231181200.



▲ The commercial-standard manual pump is convenient to use and eliminates the need for an additional air source. (only J6H)



**J6A 2800KG (6,000lbs)**



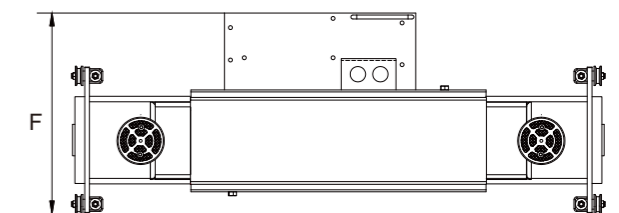
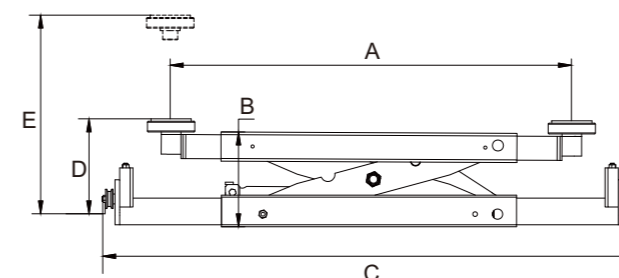
▲ Drop in rubber pads with 2.5" extension adapters.



▲ High quality pneumatic hydraulic pump with high pressure and longevity hose. (only J6A)

## FEATURES

- Equipped with commercial-grade hydraulic pump: pneumatic (J6A) and manual (J6H).
- Drop in rubber pads and 2.5" extension adapters come standard.
- Extendable arms allow for easy positioning at the recommended support points.
- Manual safety locks with two locking positions ensure a comfortable working height.
- The extendable lower sliding assembly offers excellent compatibility with products from various brands.
- The ergonomic guardrail doubles as a booster handle, making it easy to move the jack while protecting the oil hose.
- Patented floating system ensures the jack move smoothly on the rail and sit stably in the groove when lifting a vehicle.



# MODEL RJ-8A RJ-10A

The RJ-8A and RJ-10A are both excellent options for commercial workshops serving a wide range of vehicles, including sports cars, pickups and heavy-duty trucks. The product's heavy-duty structure features telescoping arms and floating patent technology, ensuring great versatility, adaptability and powerful performance.



**RJ-8A 3500KG (8,000lbs)**

**RJ-10A 4500KG (10,000lbs)**



▲ Patented **floating system** ensures the jack move smoothly on the rail and sit stably in the groove when lifting a vehicle. Patent no. 2022231181200.



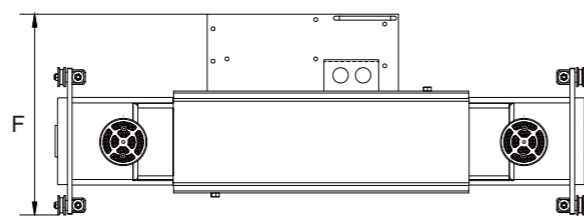
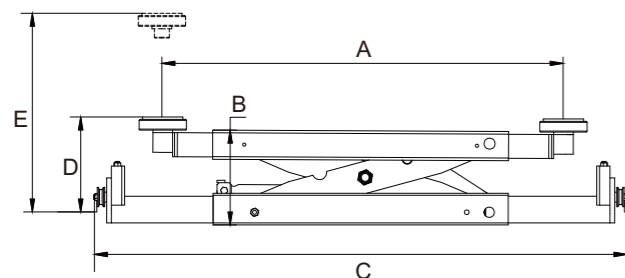
▲ Drop in rubber pads with 2.5" and 5" extension adapters.



▲ High quality pneumatic hydraulic pump with high pressure and longevity hose.

## FEATURES

- Equipped with commercial-grade pneumatic hydraulic pump.
- Whole set of drop in rubber pads, 1.5" and 2.5" extension adapters comes standard.
- Telescoping extendable arms allow for easy positioning at the recommended support points.
- Manual safety locks with two locking positions ensure a comfortable working height.
- The extendable lower sliding assembly offers excellent compatibility with products from various brands.
- The ergonomic guardrail doubles as a booster handle, making it easy to move the jack while protecting the oil hose.
- Patented floating system ensures the jack move smoothly on the rail and sit stably in the groove when lifting a vehicle.

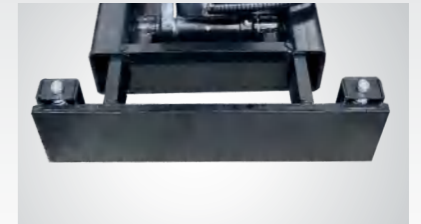


# MODEL RJ-20A

The most powerful RJ-20A is capable of lifting up to 9.0T(20,000 lbs.) which is perfect choice for Heavy-duty trucks or massive buses. It made by strengthen and thickened structure design brings you experience impressive 'muscularity', meant to perform wheel service work in safety and comfort condition



**9000KG (20,000lbs)**



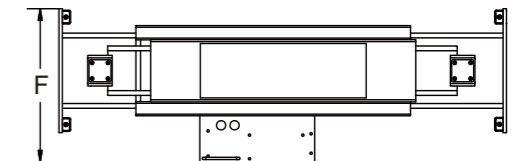
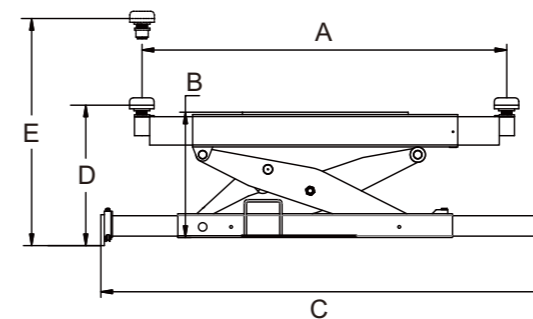
▲ Patented **floating system** ensures the jack move smoothly on the rail and sit stably in the groove when lifting a vehicle. Patent no. 2022231181200.



▲ Rugged construction single-screw frame saddle pads package with 3" & 6" extension adapters.

## FEATURES

- Equipped with heavy-duty use pneumatic hydraulic pump for excellent performance.
- Single-screw heavy-duty saddle adapters provide more suitable chassis engagement and ensure secure support.
- 3" and 6" extension adapters come standard.
- Reinforced heavy-duty scissors ensure secure lifting work.
- Heavy-duty extendable arms allow for easy positioning at the recommended support points.
- Manual safety locks with two locking positions ensure a comfortable working height.
- The extendable lower sliding assembly offers excellent compatibility with products from various brands.
- The ergonomic guardrail doubles as a booster handle, making it easy to move the jack while protecting the oil hose.
- Patented floating system ensures the jack move smoothly on the rail and sit stably in the groove when lifting a vehicle.



## SPECIFICATIONS

Model	Lifting Capacity	Lifting Time	A	B	C	D	E		F	Gross Weight	Air Pressure	Pump
			Arm Pads Reach	Min. Height	Support Base Width	Min. rubber pad Height	Without adapters	With adapters	Overall Width			
RJ-8A	3500kg	50S	875mm~1422mm (34 7/16"~56")	272mm (10 11/16")	915mm~1435mm (36"~56 1/2")	276mm (10 7/8")	538mm (21 3/16")	729mm (28 11/16")	552mm (21 3/4")	180kg (397lbs)	0.8Mpa	Manual Pump
RJ-10A	4500kg	50S	880mm~1585mm (34 5/8"~62 3/8")	280mm (11")	915mm~1435mm (36"~56 1/2")	284mm (11 3/16")	546mm (21 1/2")	737mm (29")	552mm (21 3/4")	212kg (467lbs)	0.8Mpa	Manual Pump
RJ-20A	9000kg	50S	1150mm~1680mm (45 1/4"~66 1/8")	360mm (14 3/16")	1147mm~1480mm (45 3/16"~58 1/4")	421~455mm (16 9/16"~17 15/16")	787~821mm (31"~32 5/16")	1016~1050mm (40"~41 5/16")	647mm (25 1/2")	376kg (829lbs)	0.8Mpa	Manual Pump

\*\*\*The images, technical specifications, and descriptions shown here are subject to change without prior notice. Please contact us for the latest information if necessary.\*\*\*